

# Nemesis Laser Control System

# Laser Technology Ltd

Web: [www.lasertechnologyltd.co.uk](http://www.lasertechnologyltd.co.uk)

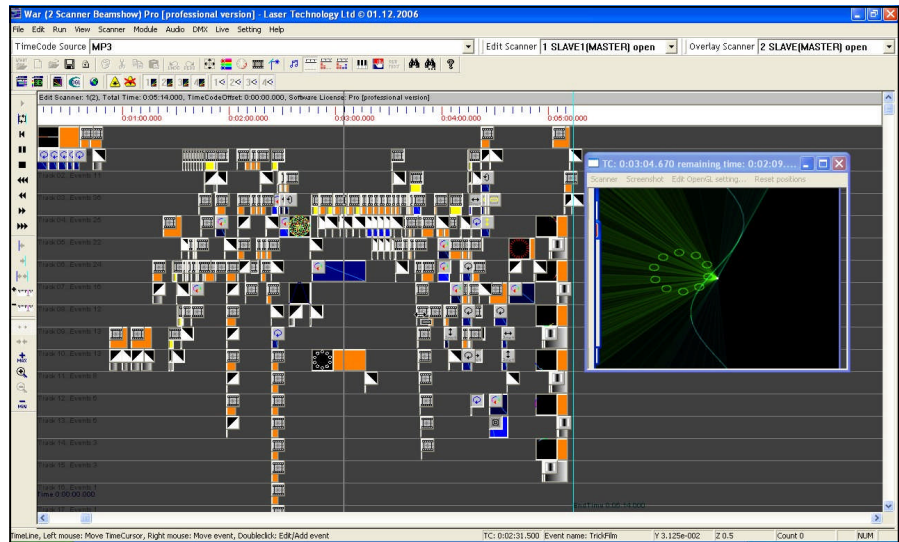


## Full live control:

- MIDI keyboard
- 512 DMX in/out channels
- 16 sliders
- 2 joysticks
- Touchscreen

## Special Effects:

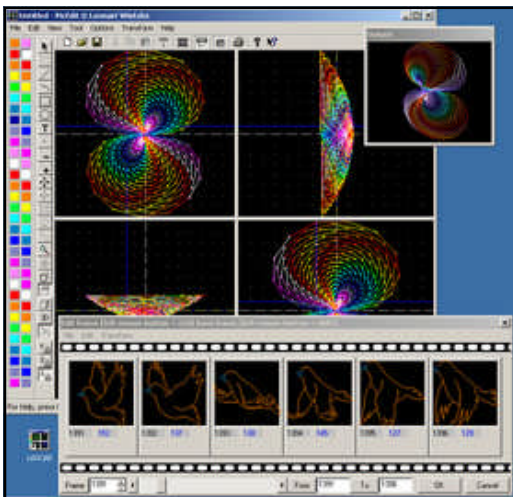
- OpenGL monitor preview
- Realtime 3D
- Morphing
- Raster scanning
- Colour morphing
- Colour rotation
- Fading
- Bsplines
- Camera-paths
- Kinematic
- Image masking
- Hidden line
- Geometric correction
- 3D fonts
- Abstracts
- Interactive, true type font TTF
- Running text
- Auto animation,
- 3D lissajous figures



## User Friendly Timeline interface

### Programming:

- Powerful & easy-to-use, user friendly timeline interface
- SMPTE timecode
- Winamp-Mediaplayer-support
- 64 tracks
- Beatmarkers
- Music synchronisation and FFT analysis
- 3D CAD picture editor: ILDA and 3DS import/export
- Large show library



## 3D CAD Picture Editor



## USB Interface

## Output hardware:

USB or PCI Interface ILDA standard connectors, 12-16 bit graphic resolution RGB, colour channel PCAOM analogue blanking modulation, up to 200.000 PPS TTL outputs for driving a laser bench. 512 DMX in/out channels

Network and wireless LAN solutions, up to 32 multi-scanners

### U.K. Office:

Laser Technology Ltd,  
PO Box 488,  
Haverhill,  
Suffolk,  
CB9 7UA,  
U.K.  
Phone: +44 (0)208 1331291

### Turkish. Office:

Laser Technology,  
Dr. Alimbey Cad,  
1025 Sok no 44,  
Bodrum,  
Mugla,  
Turkey.  
Phone: +90 (0)538 6669332

